

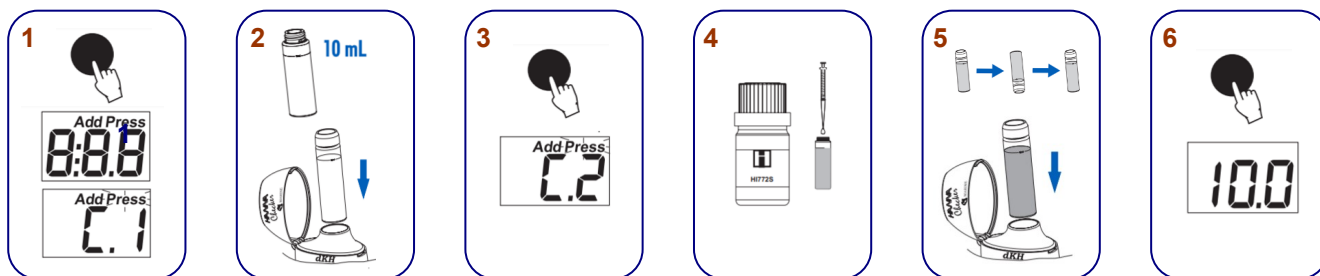
Measuring Alkalinity

Saltwater Aquarium Alkalinity Colorimeter



General Use

1. Turn the meter on by pressing the button. When the display shows “Add C.1” with “Press” blinking, the meter is ready.
2. Fill the cuvette to the 10 mL mark with sample water and replace the cap. Dry the outside of the cuvette, then place into the meter. Close the meter’s cap.
3. Press the button. When display shows “Add”, “C.2” with “Press” blinking the meter is zeroed.
4. Remove the cuvette from the meter and unscrew the cap. Using a 1 mL syringe carefully add exactly 1 mL of HI772S Reagent to the sample water.
5. Replace the cap and gently invert 5 times. Place the cuvette back into the meter. Note: Pay attention not to spill reagent otherwise full color development may be inhibited.
6. Press the button. The instrument directly displays the concentration of alkalinity in dKH.
Alkalinity conversion:
 $1 \text{ dKH} = 17.86 \text{ ppm CaCO}_3$
 $1 \text{ dKH} = 0.358 \text{ meq/L}$
The meter automatically turns off after 10 minutes.
7. Record alkalinity reading on the data sheet.



Reference:

HANNA Instruments Instructional Manual HI772 Marine Alkalinity
https://cdn2.hubspot.net/hubfs/2134380/product-manuals/IST772_07_18-1.pdf