

# **Water Quality Conditions for Cedar Key 2008-2023**



# Data sourced from

## UF Stations

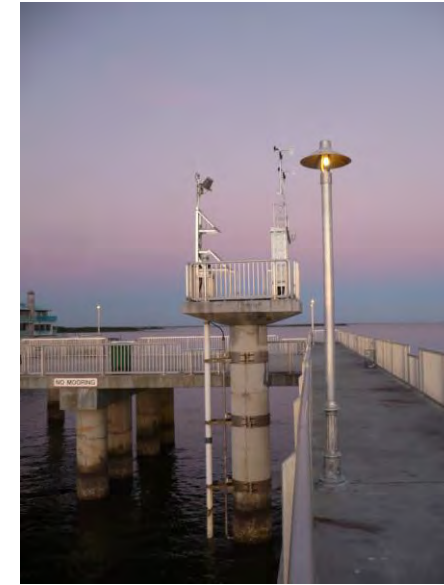
- Dog Island and Gulf Jackson
- In-Situ Aqua TROLL 600 sondes:
- Sensors: water temp, salinity, dissolved oxygen
- Collection interval: 30 mins
- [shellfish.ifas.ufl.edu/water-quality-monitoring/](http://shellfish.ifas.ufl.edu/water-quality-monitoring/)

## NOAA Station

- Cedar Key ID: 87278520
- Sensors: Air temp, water temp, wind, pressure
- Collection interval: 6 min or **1 hr**
- [tidesandcurrents.noaa.gov/physocean.html?id=8727520](http://tidesandcurrents.noaa.gov/physocean.html?id=8727520)

## NOAA National Weather Service

- Chiefland 5 ESE Station
- Climate summaries
- Records begin in 1956
- [www.weather.gov/tbw/climatesummaries](http://www.weather.gov/tbw/climatesummaries)

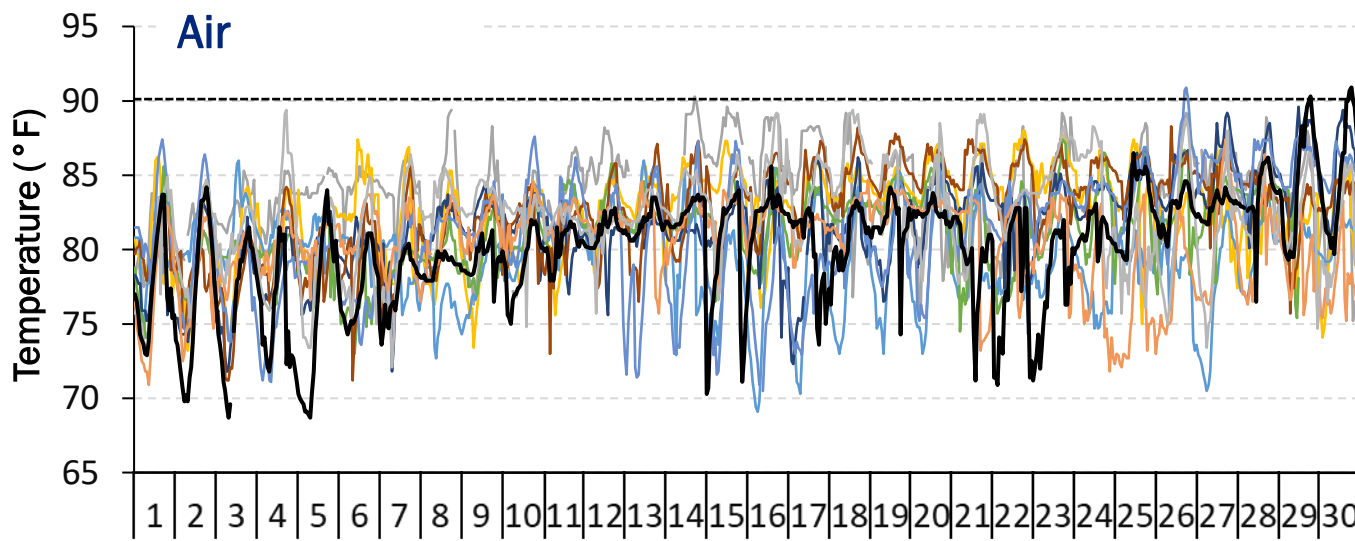
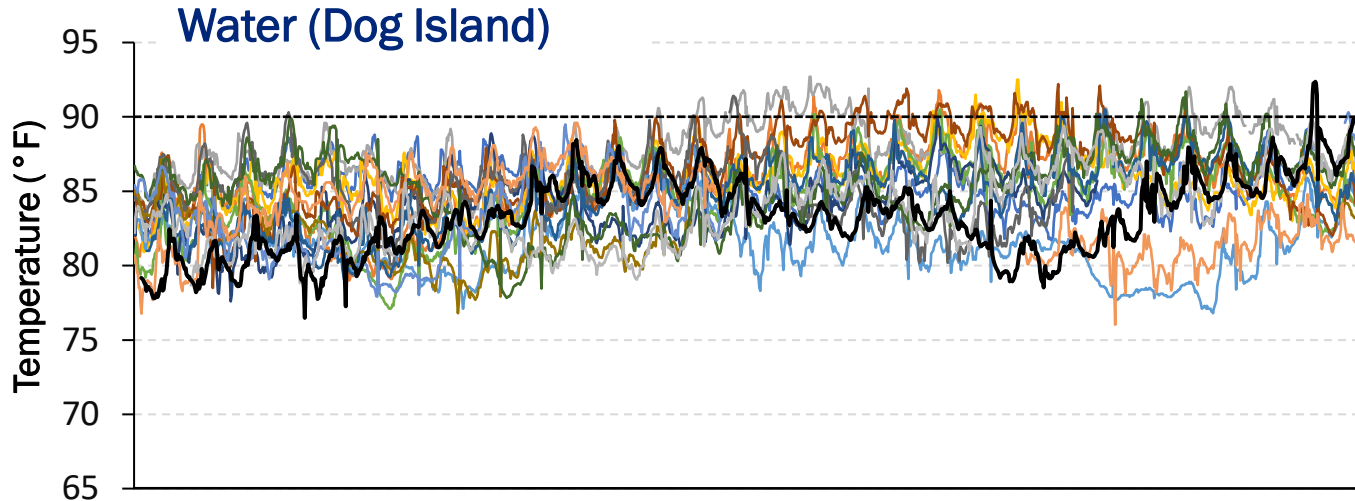


The NOAA National Weather Service Tampa Bay Area logo and contact information are displayed in a blue rounded rectangle. On the left are the NOAA and National Weather Service Tampa Bay logos. To the right, the text reads: "NOAA - National Weather Service", "Tampa Bay Area", "2525 14th Avenue SE, Ruskin, Florida 33570", "813-645-2323", and "https://weather.gov/tampabay".

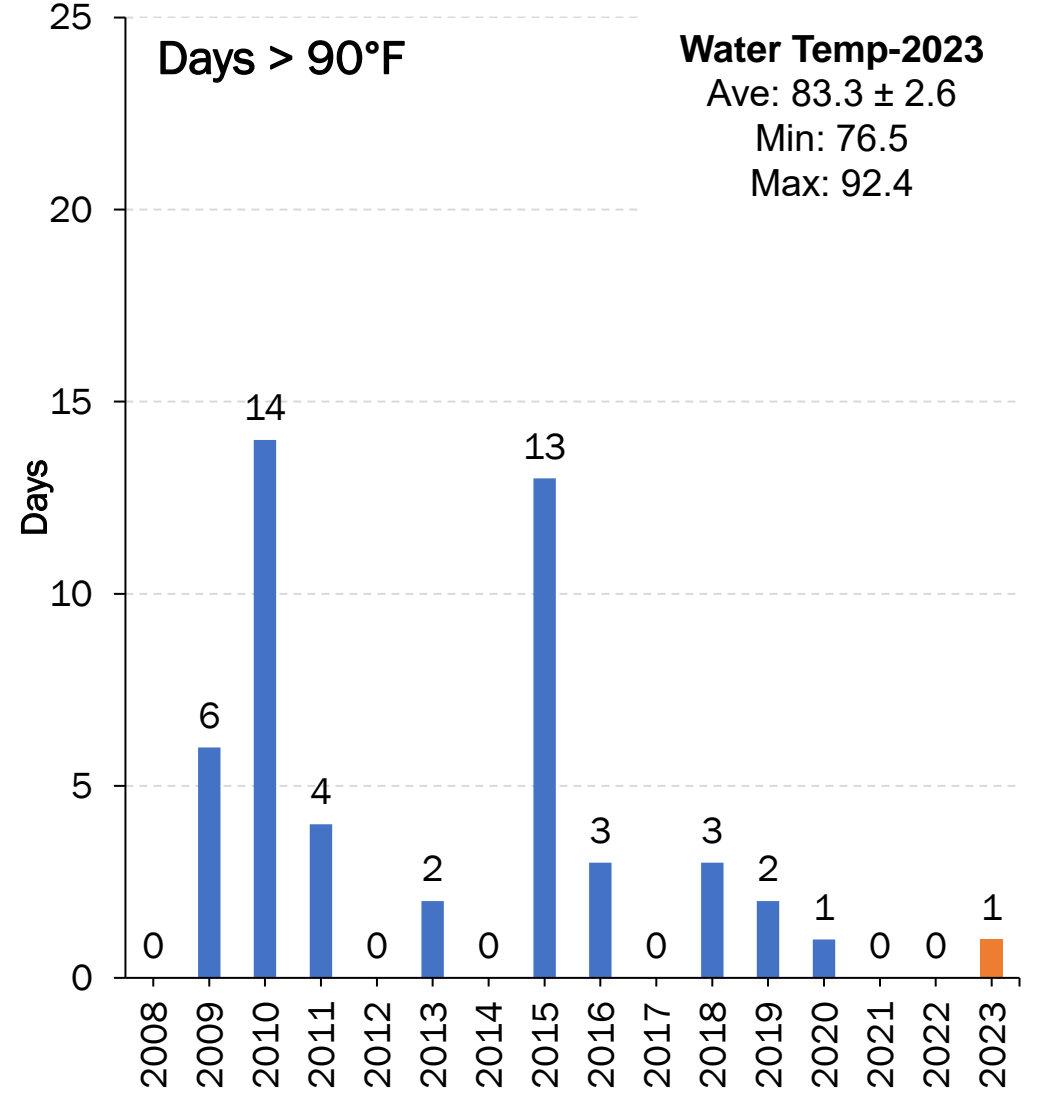
## Suwannee River Water Management District

- Levy County
- Hydrologic Condition Reports
- Nexrad Monthly Rainfall Totals by County (inches)
- [www.mysuwanneeriver.com/507/Water-Data-Portal](http://www.mysuwanneeriver.com/507/Water-Data-Portal)

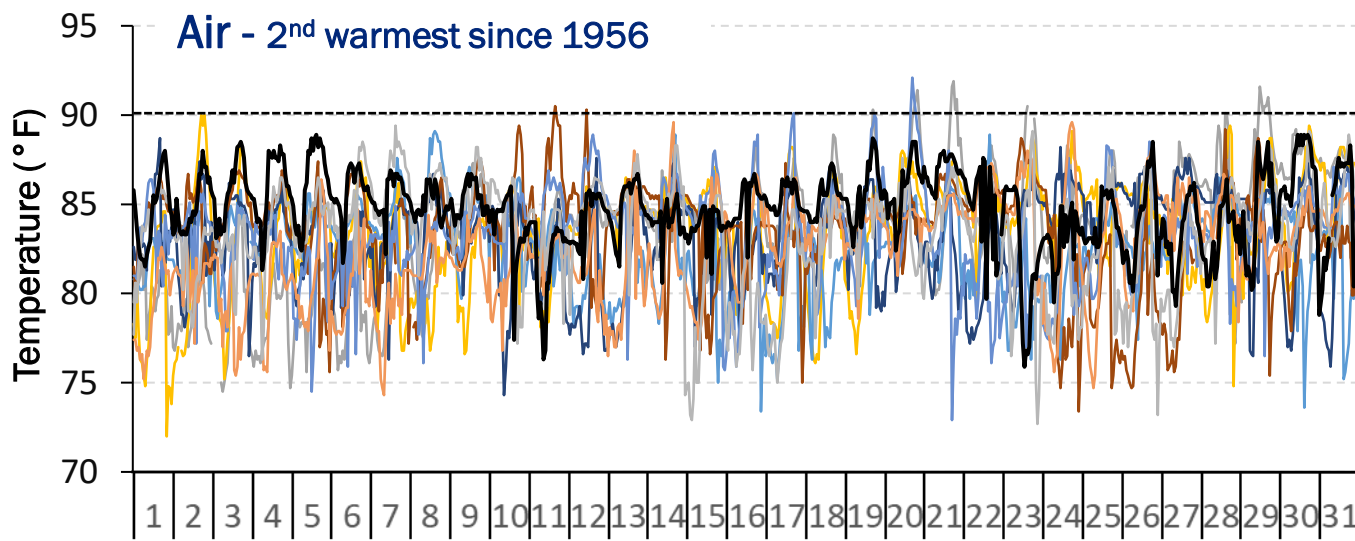
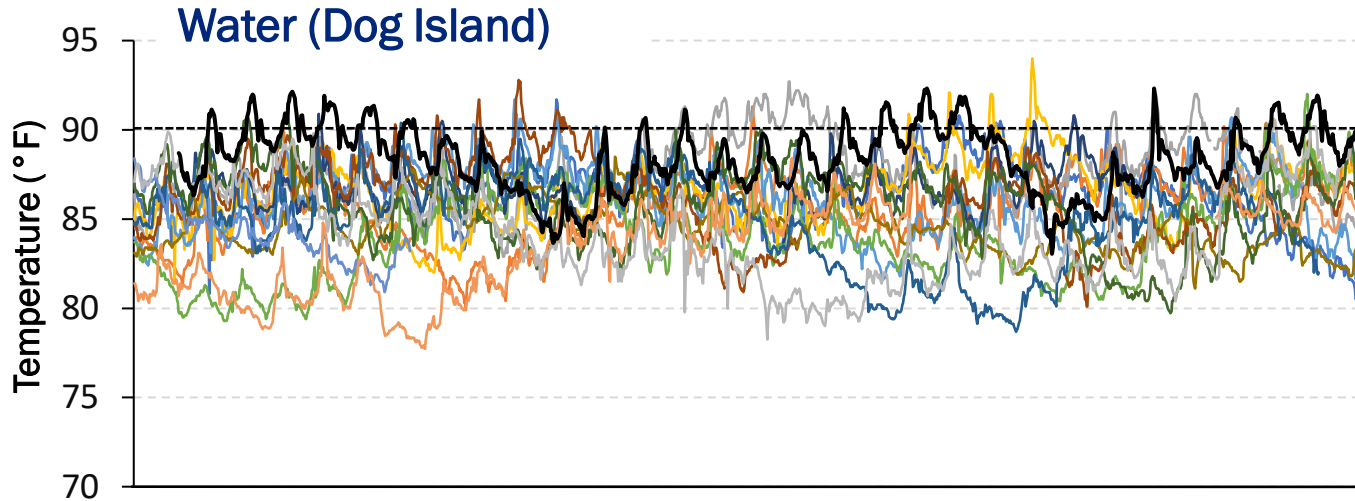
# June Temperatures (°F)



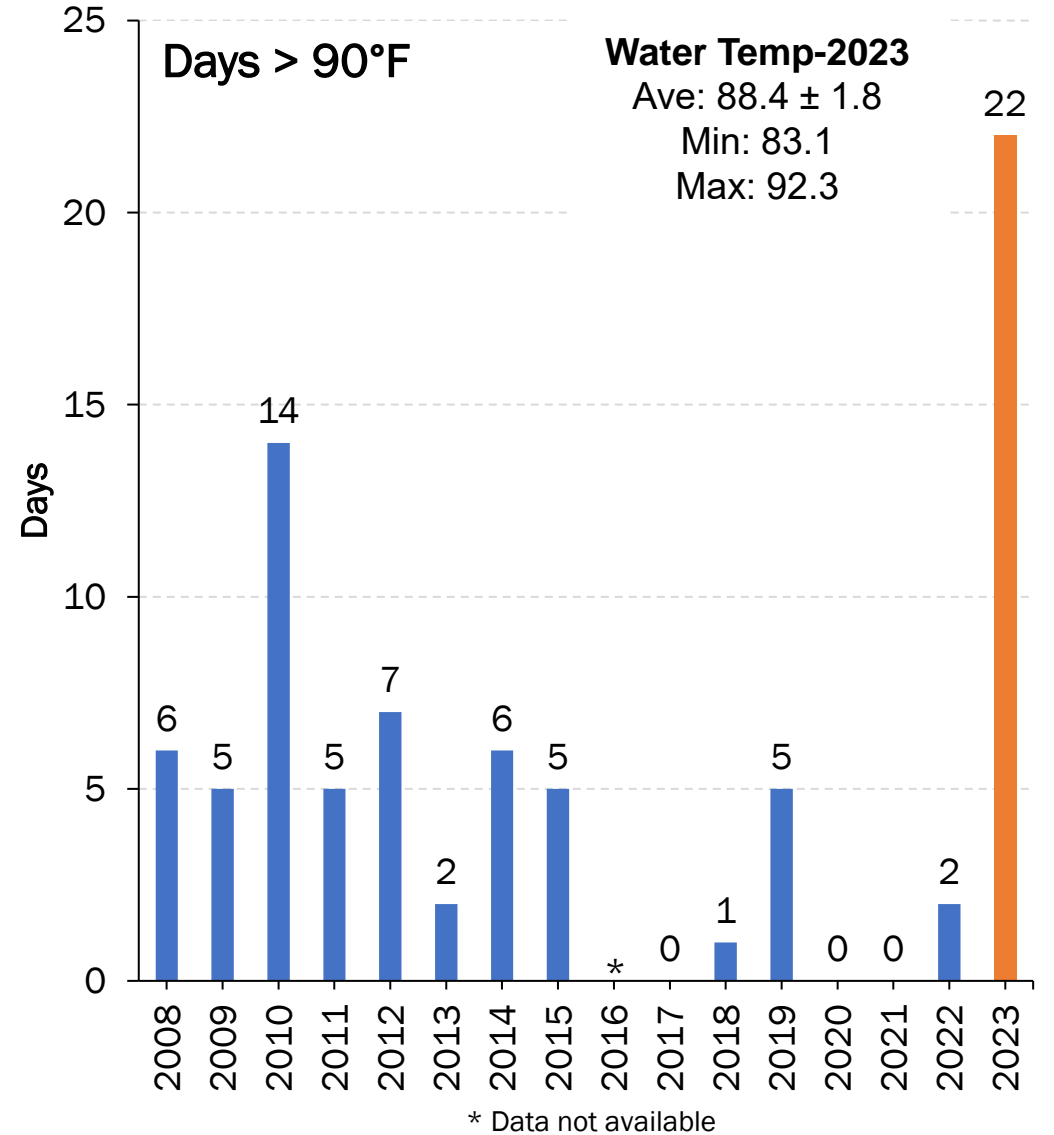
— 2008    — 2009    — 2010    — 2011    — 2012    — 2013    — 2014    — 2015  
— 2016    — 2017    — 2018    — 2019    — 2020    — 2021    — 2022    — 2023



# July Temperatures (°F)



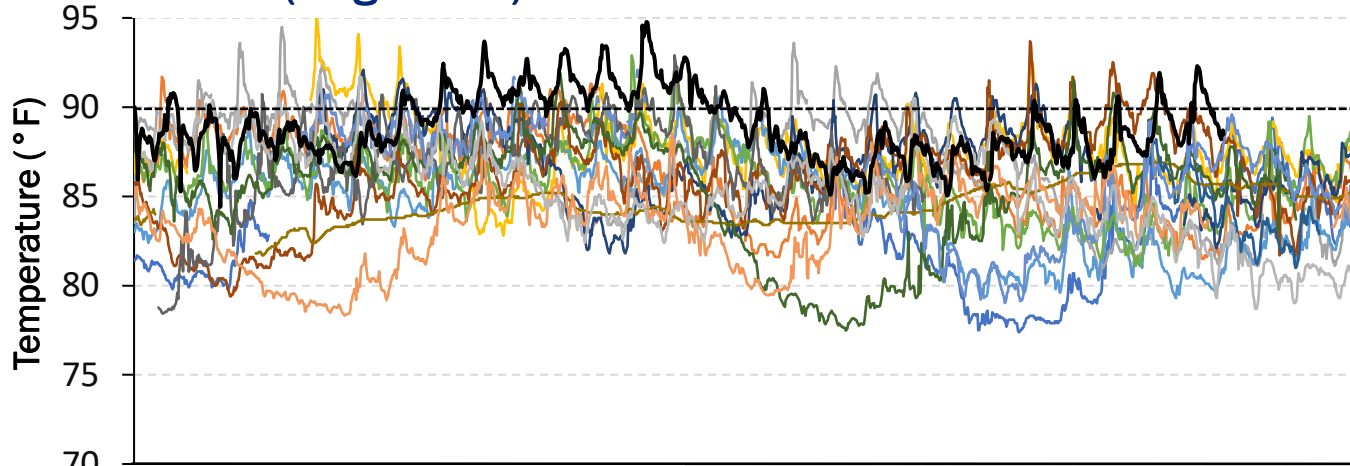
— 2008 — 2009 — 2010 — 2011 — 2012 — 2013 — 2014 — 2015  
 — 2016 — 2017 — 2018 — 2019 — 2020 — 2021 — 2022 — 2023



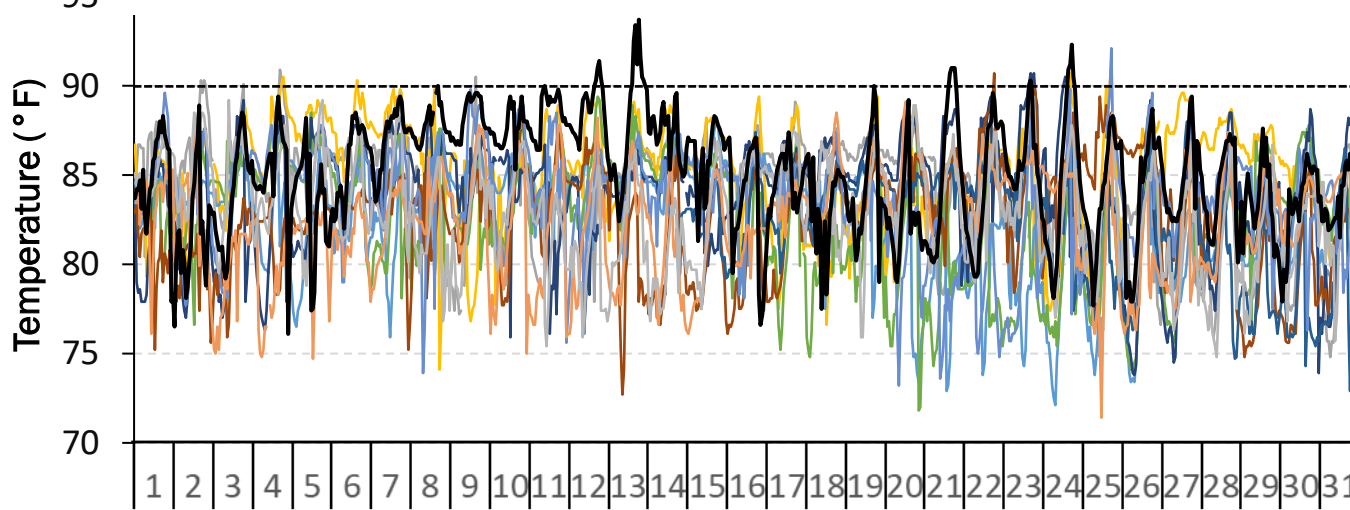


# August Temperatures (°F)

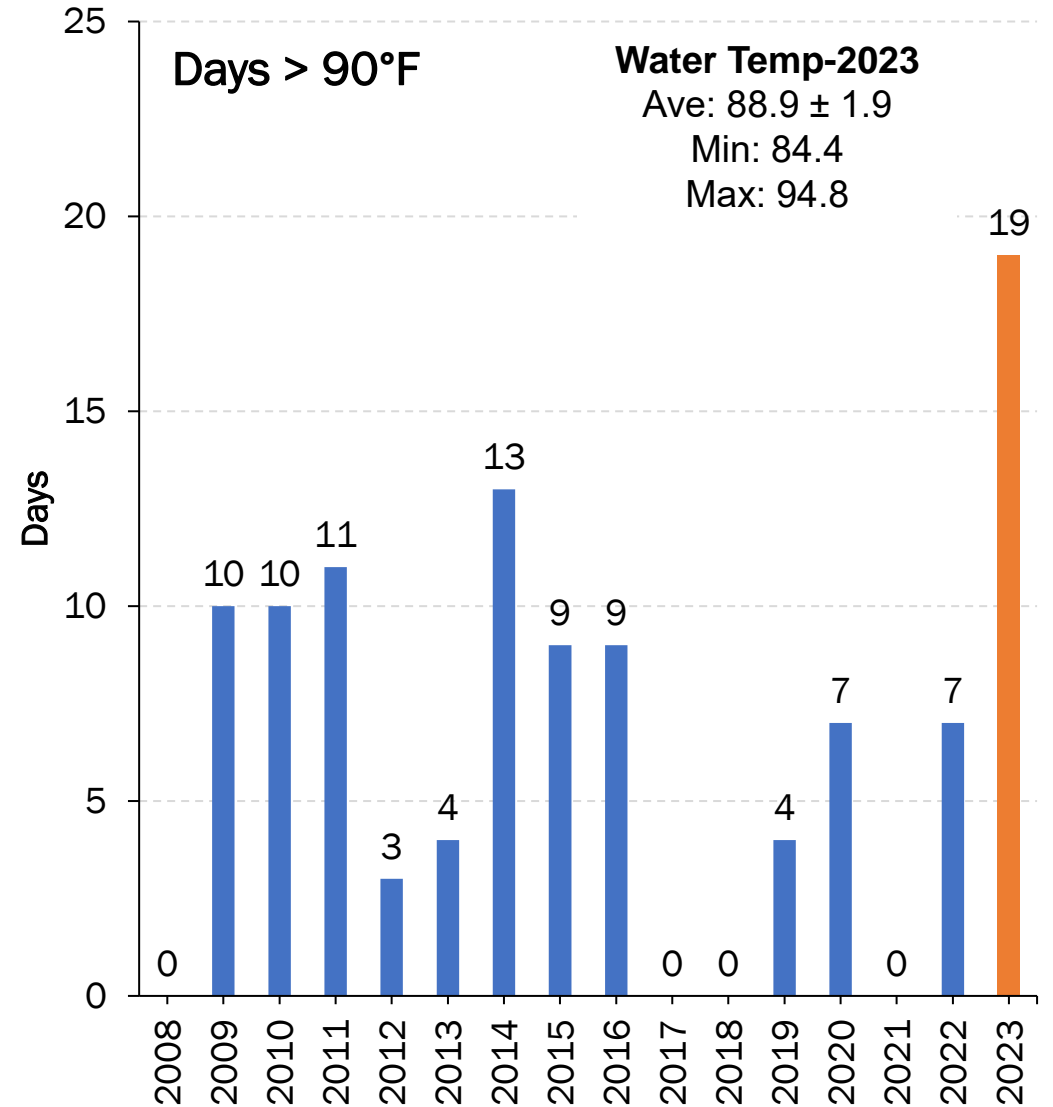
Water (Dog Island)



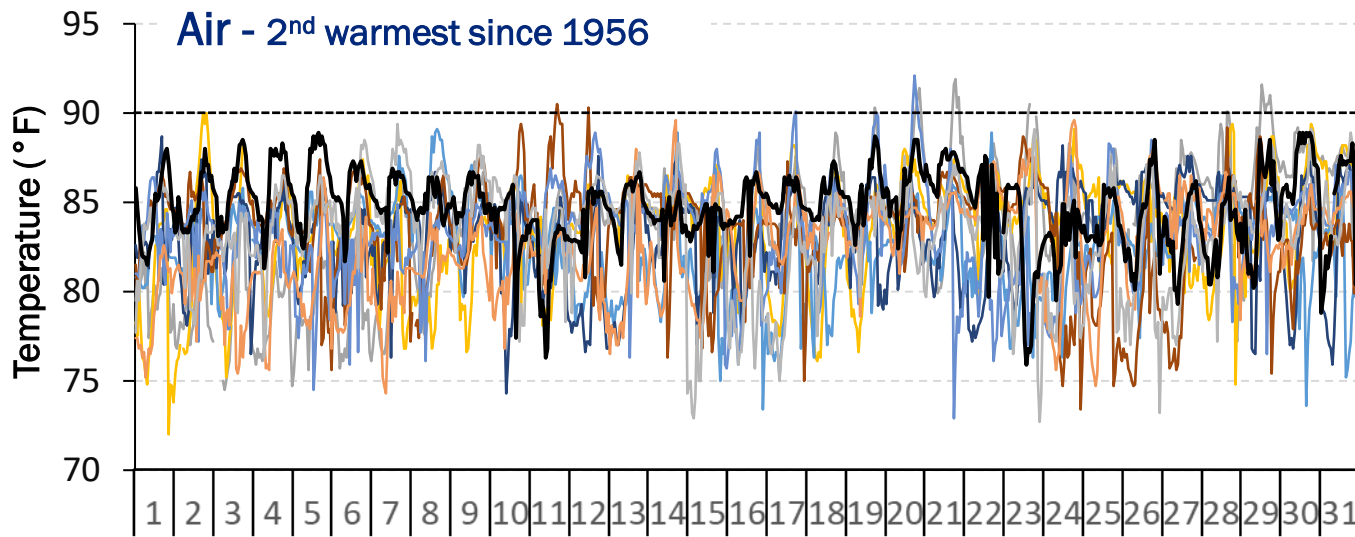
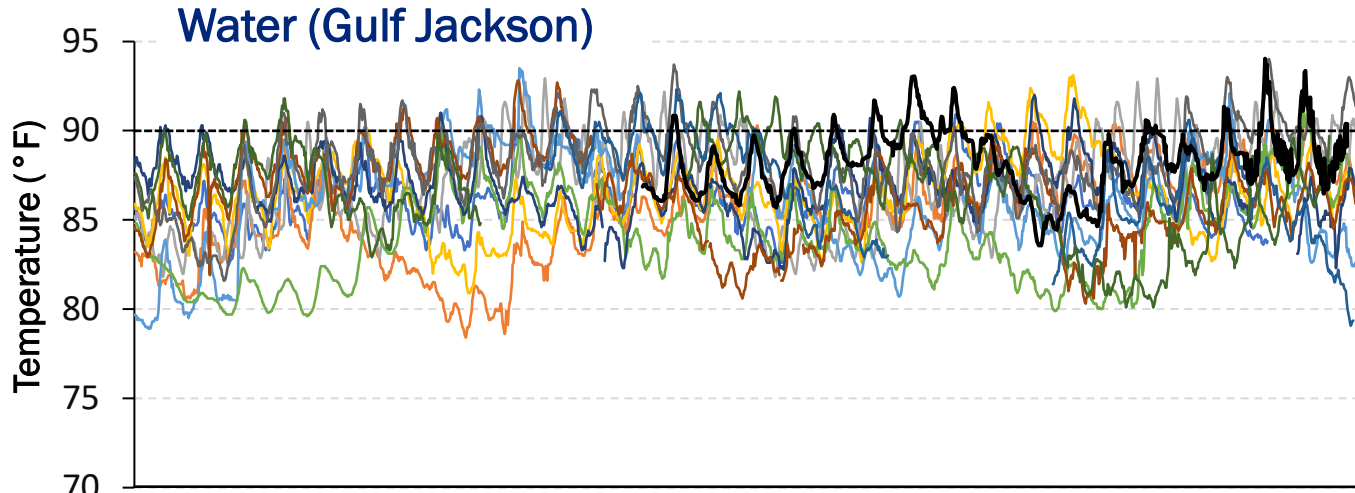
Air – 1<sup>st</sup> warmest since 1956



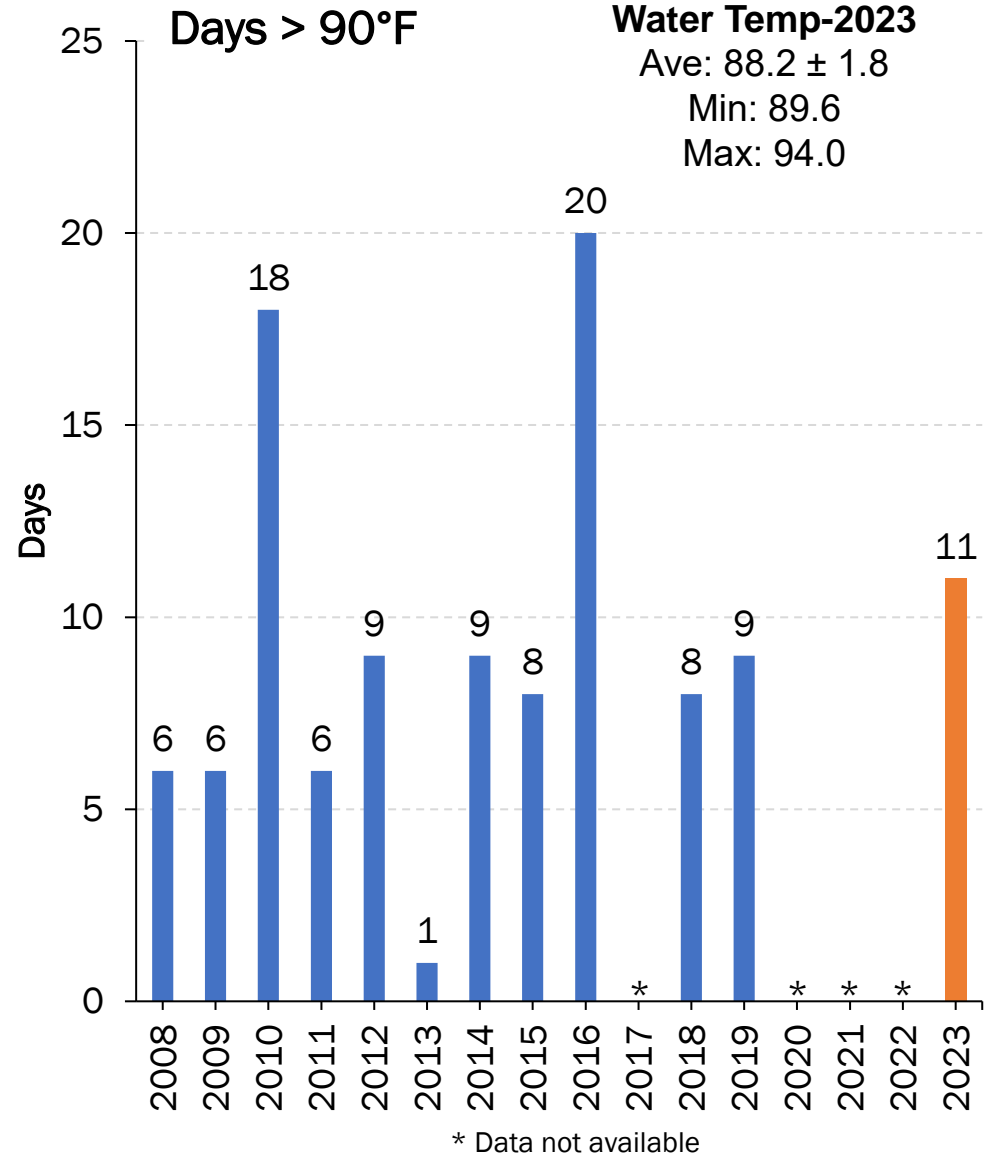
— 2008   — 2009   — 2010   — 2011   — 2012   — 2013   — 2014   — 2015  
— 2016   — 2017   — 2018   — 2019   — 2020   — 2021   — 2022   — 2023



# July Temperatures (°F)

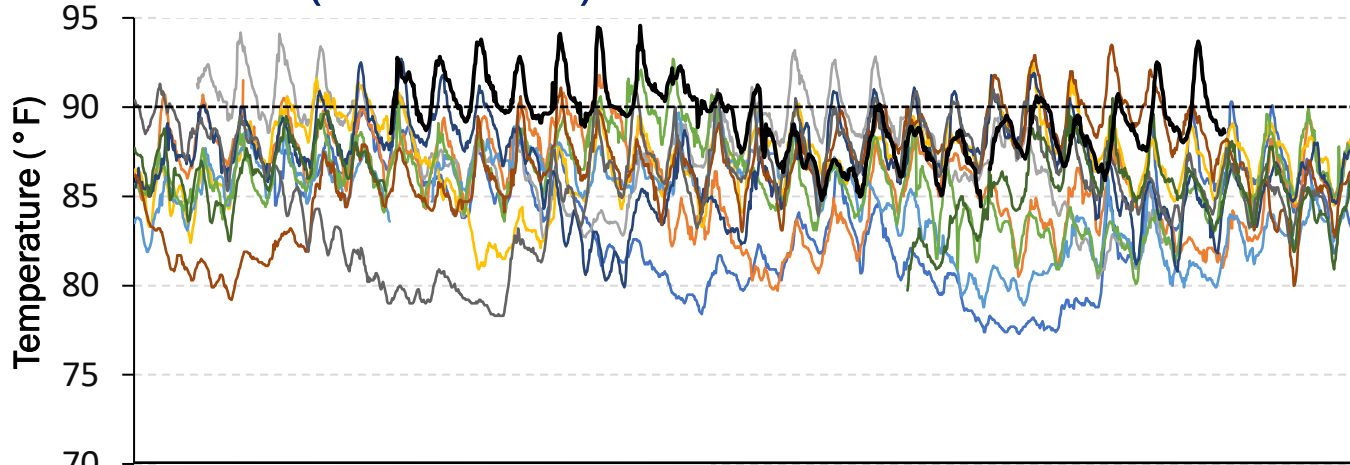


— 2008 — 2009 — 2010 — 2011 — 2012 — 2013 — 2014 — 2015  
 — 2016 — 2017 — 2018 — 2019 — 2020 — 2021 — 2022 — 2023

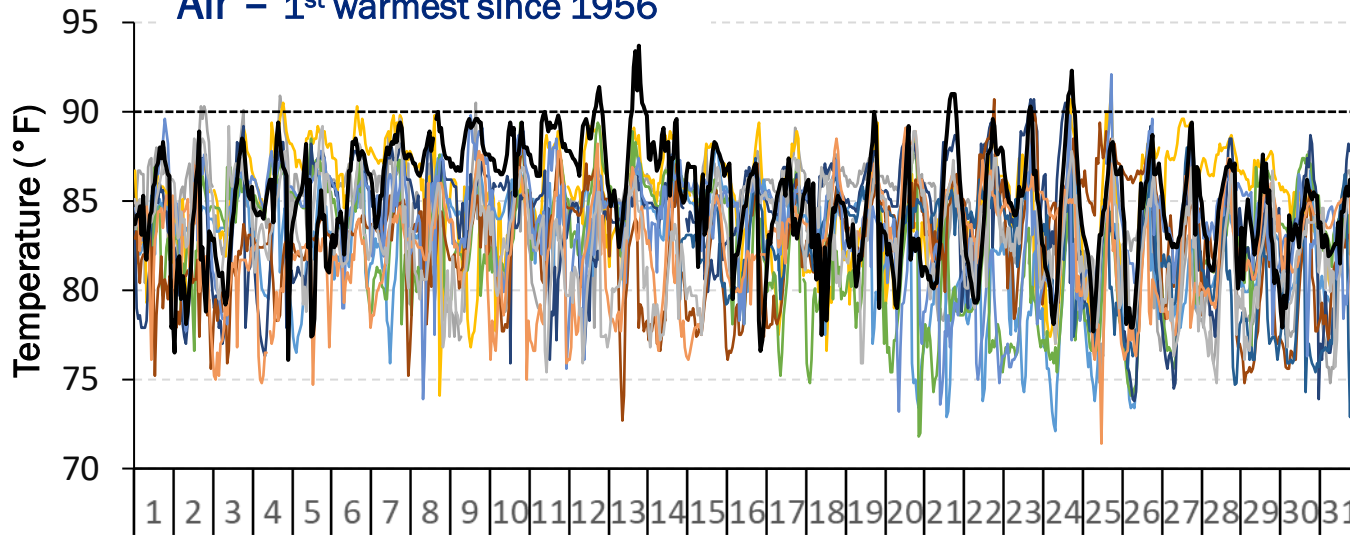


# August Temperatures (°F)

Water (Gulf Jackson)

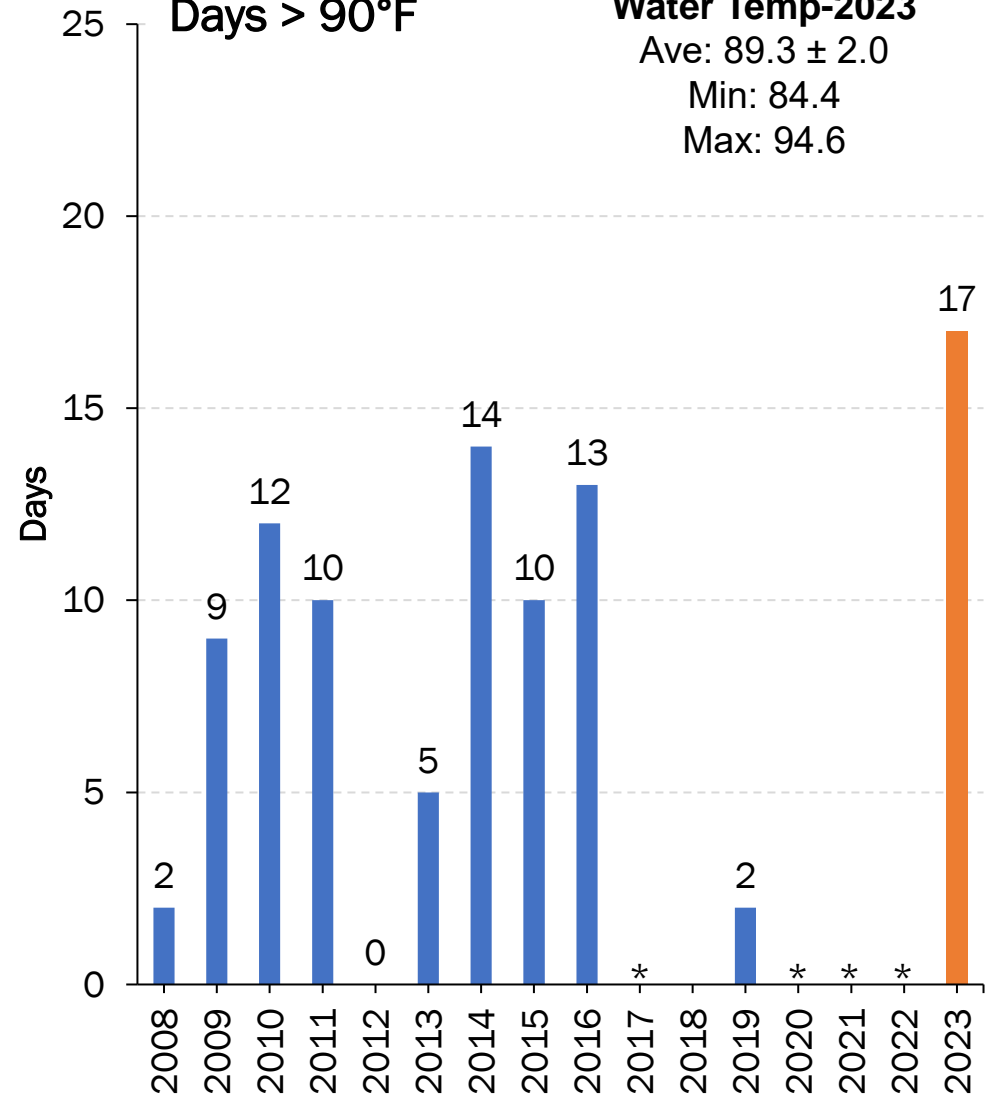


Air – 1<sup>st</sup> warmest since 1956



— 2008   — 2009   — 2010   — 2011   — 2012   — 2013   — 2014   — 2015  
— 2016   — 2017   — 2018   — 2019   — 2020   — 2021   — 2022   — 2023

Days > 90°F



Water Temp-2023

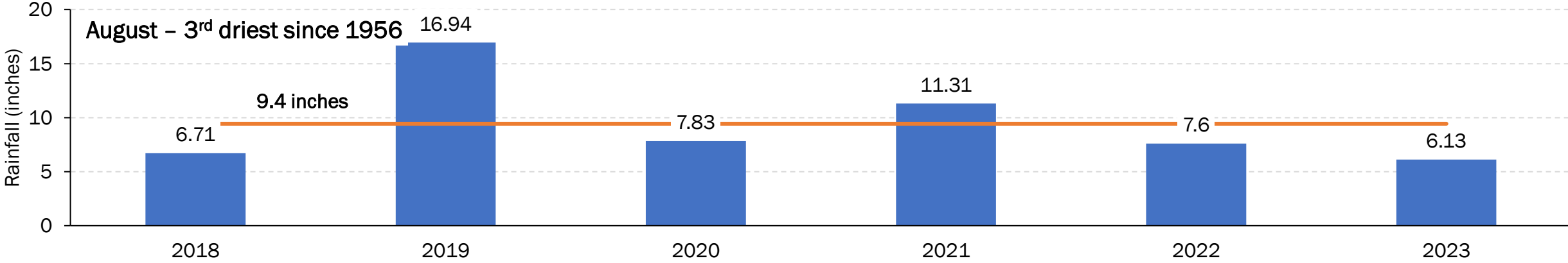
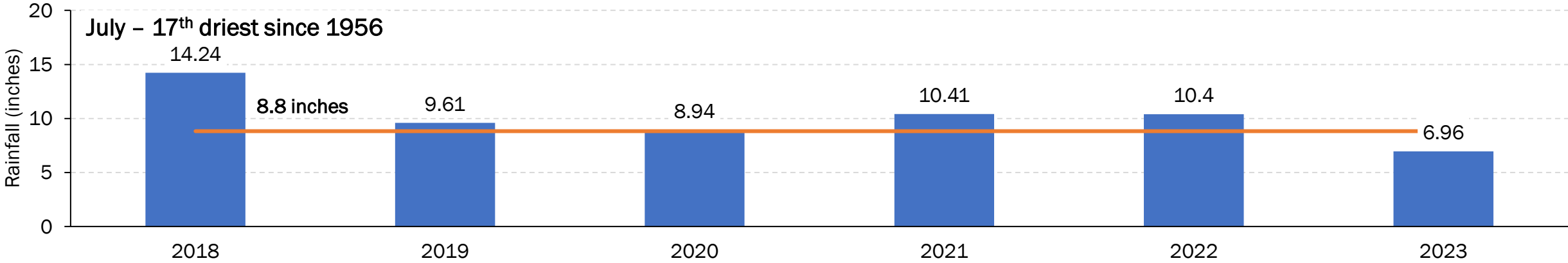
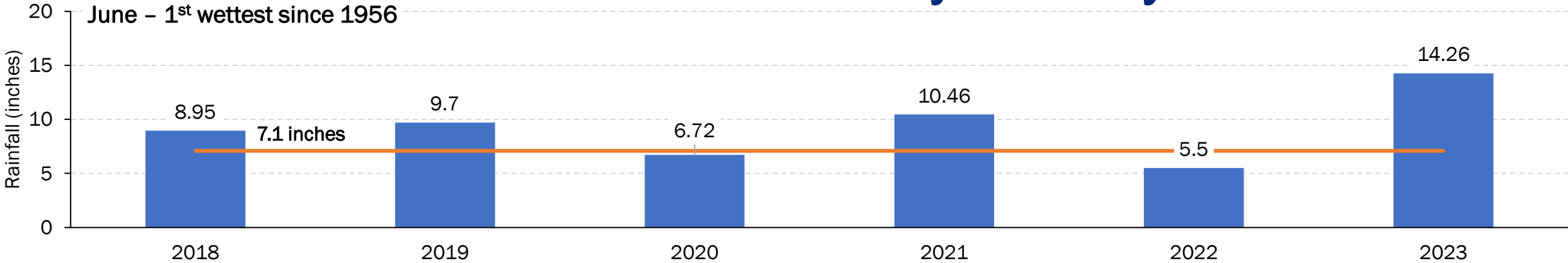
Ave:  $89.3 \pm 2.0$   
 Min: 84.4  
 Max: 94.6

\* Data not available

# Levy County Rainfall Totals

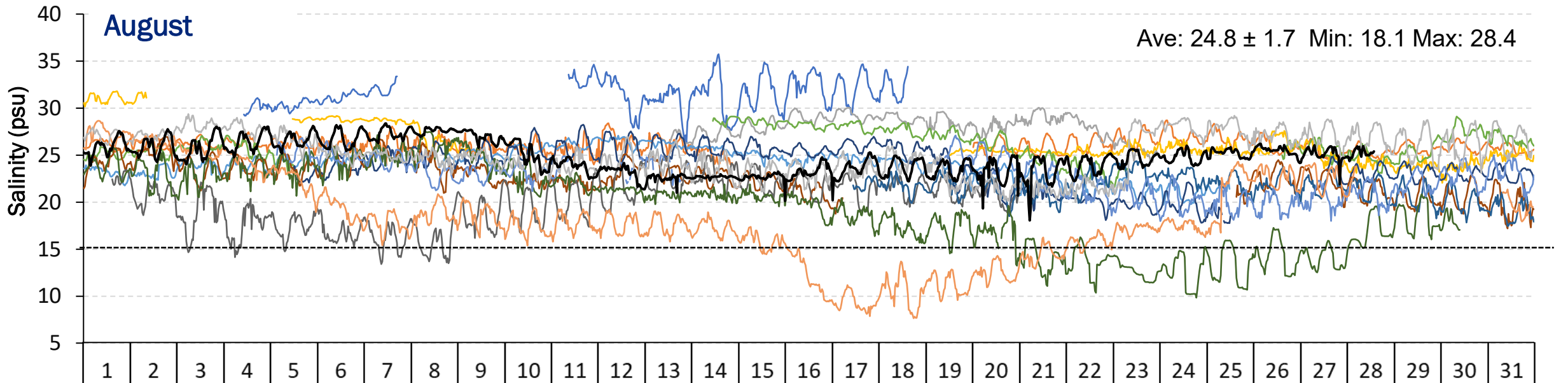
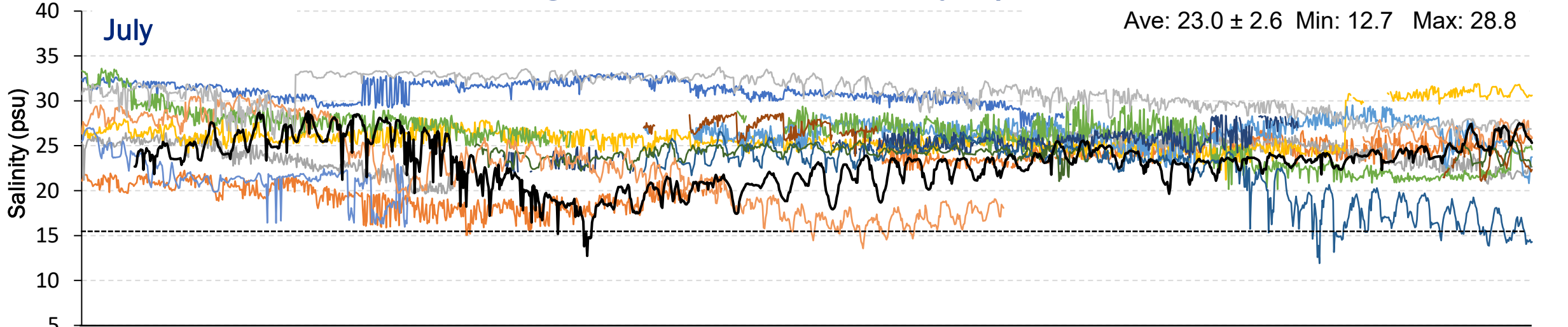
## Average Monthly Rainfall\*

\*Based on PRISM LT81 monthly rainfall averages by county (1927-2021)



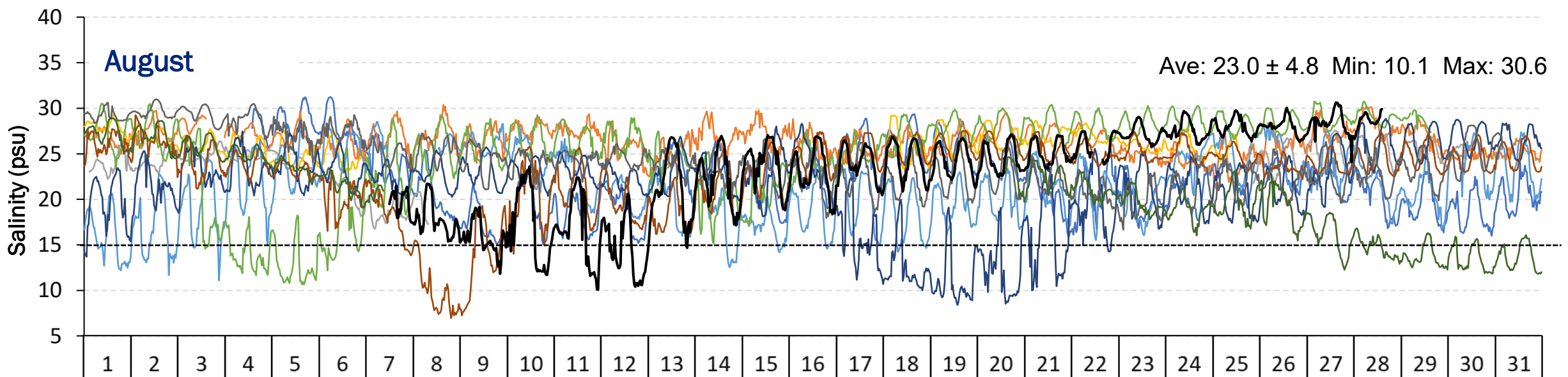
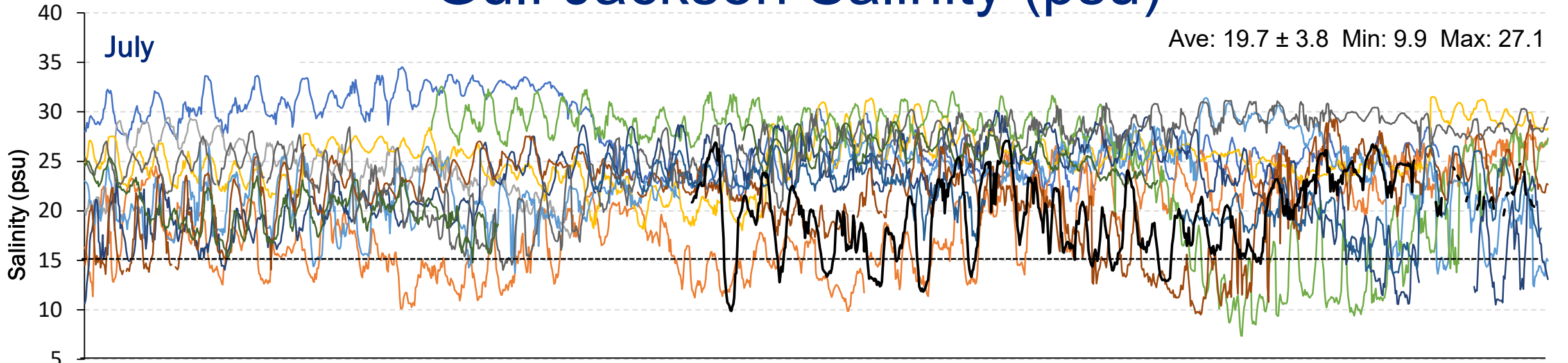


# Dog Island Salinity (psu)



— 2008 — 2009 — 2010 — 2011 — 2012 — 2013 — 2014 — 2015  
— 2016 — 2017 — 2018 — 2019 — 2020 — 2021 — 2022 — 2023

# Gulf Jackson Salinity (psu)



— 2008 — 2009 — 2010 — 2011 — 2012 — 2013 — 2014 — 2015  
— 2016 — 2017 — 2018 — 2019 — 2020 — 2021 — 2022 — 2023