



# **YEAR 1 RESULTS**

## **2020-2021**

---

### **Water Chemistry**

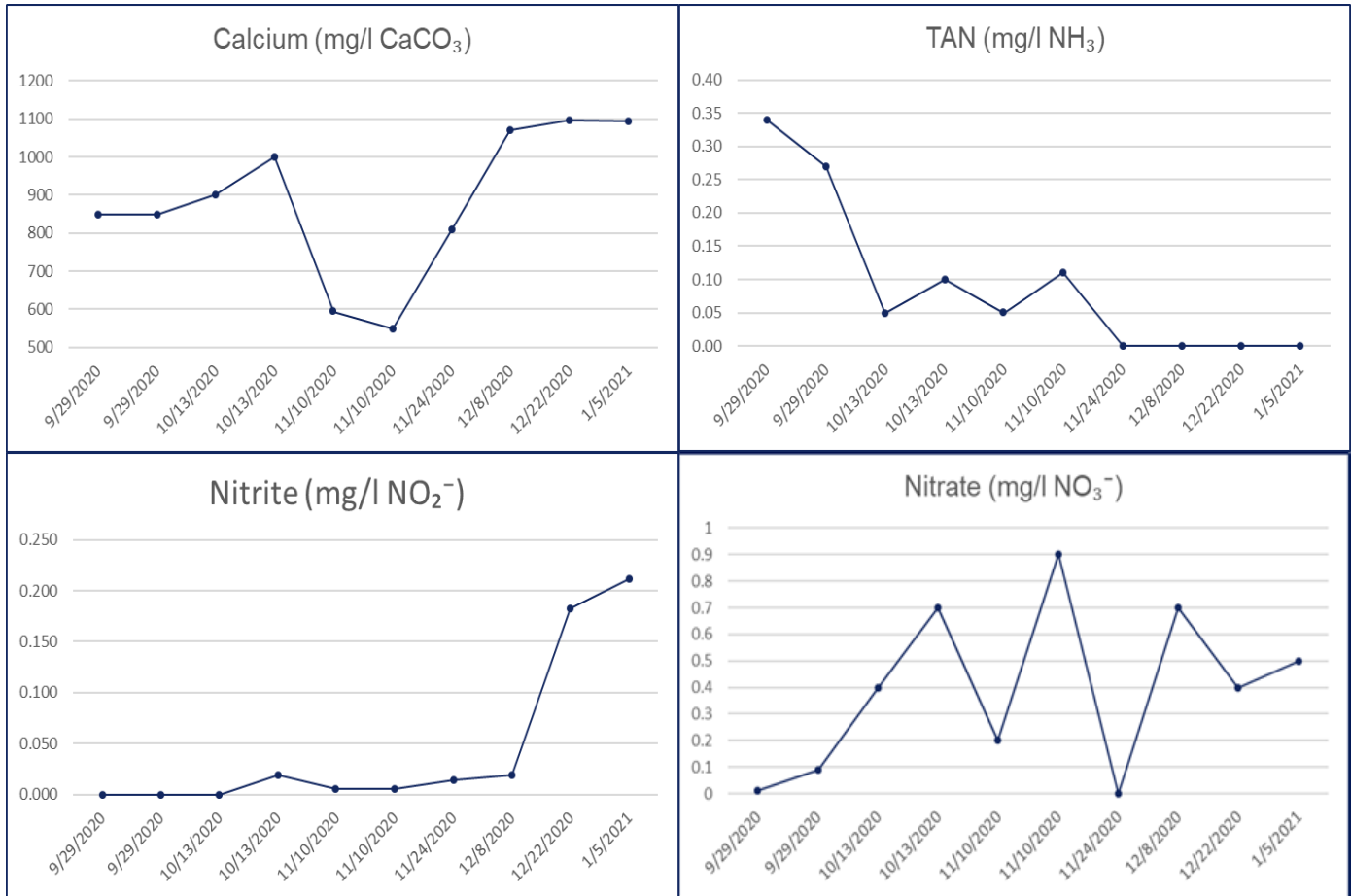
# Clam SEED Project Year 1 Report

## D342 Hatchery

### Source: Well

### System: Incoming Tank Water

## Water Chemistry



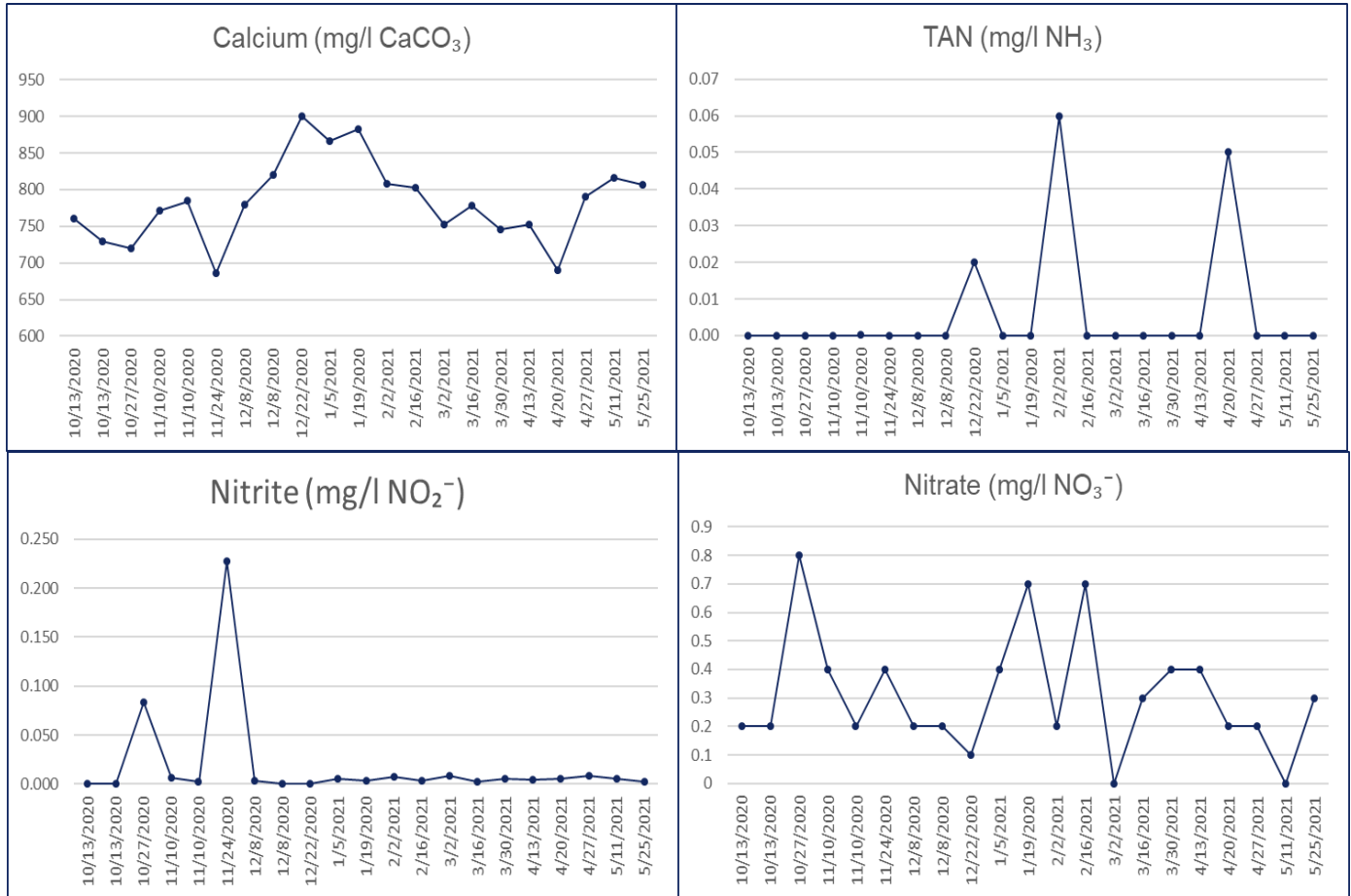
# Clam SEED Project Year 1 Report

## E232 Hatchery

### Source: Surface

### System: Various

## Water Chemistry



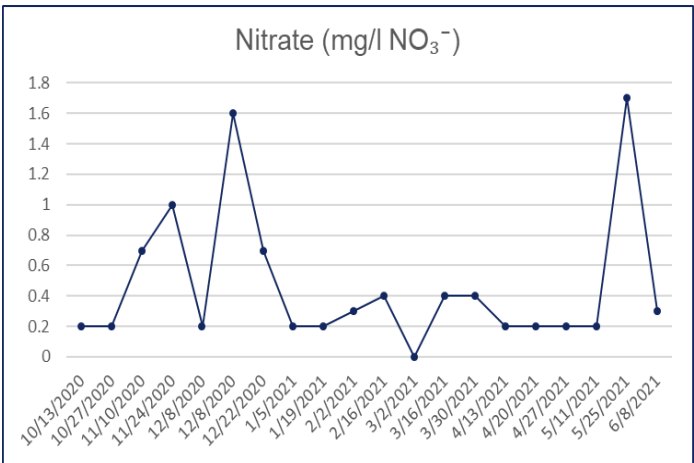
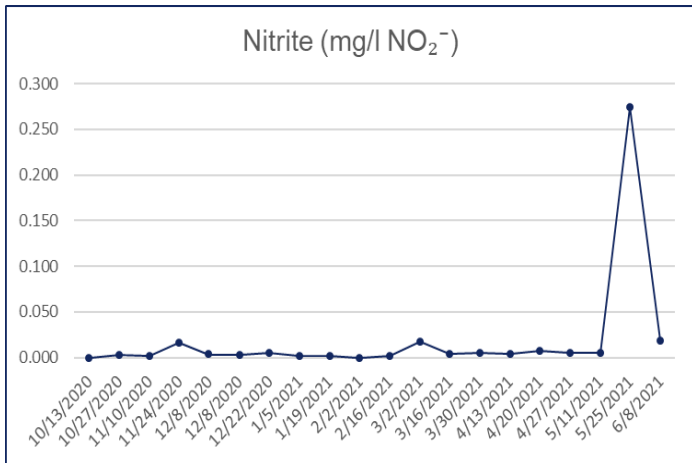
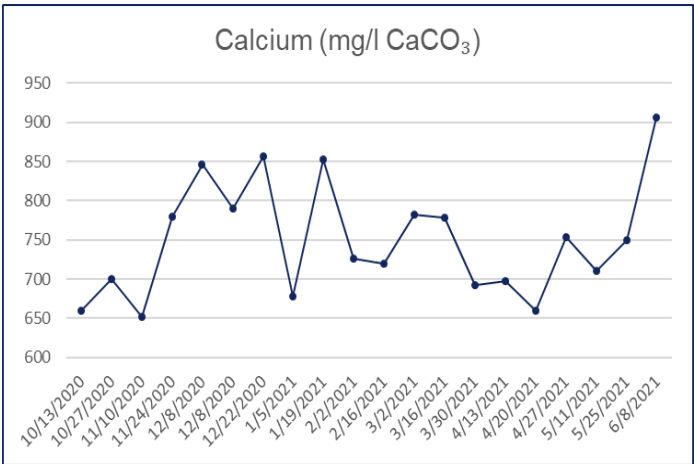
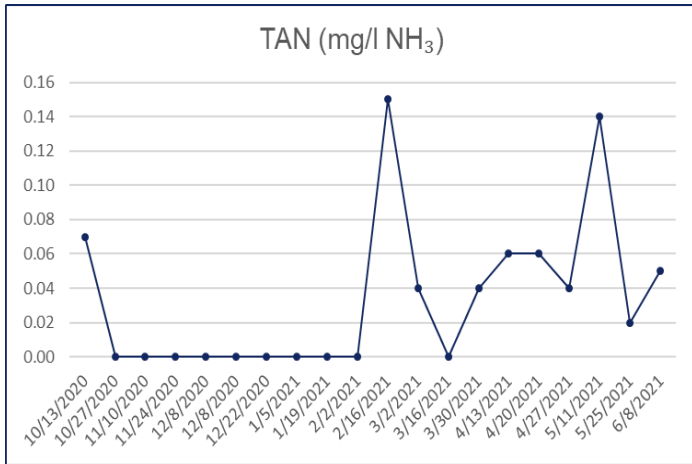
# Clam SEED Project Year 1 Report

## F626 Hatchery

### Source: Surface

### System: Incoming Tank Water

## Water Chemistry

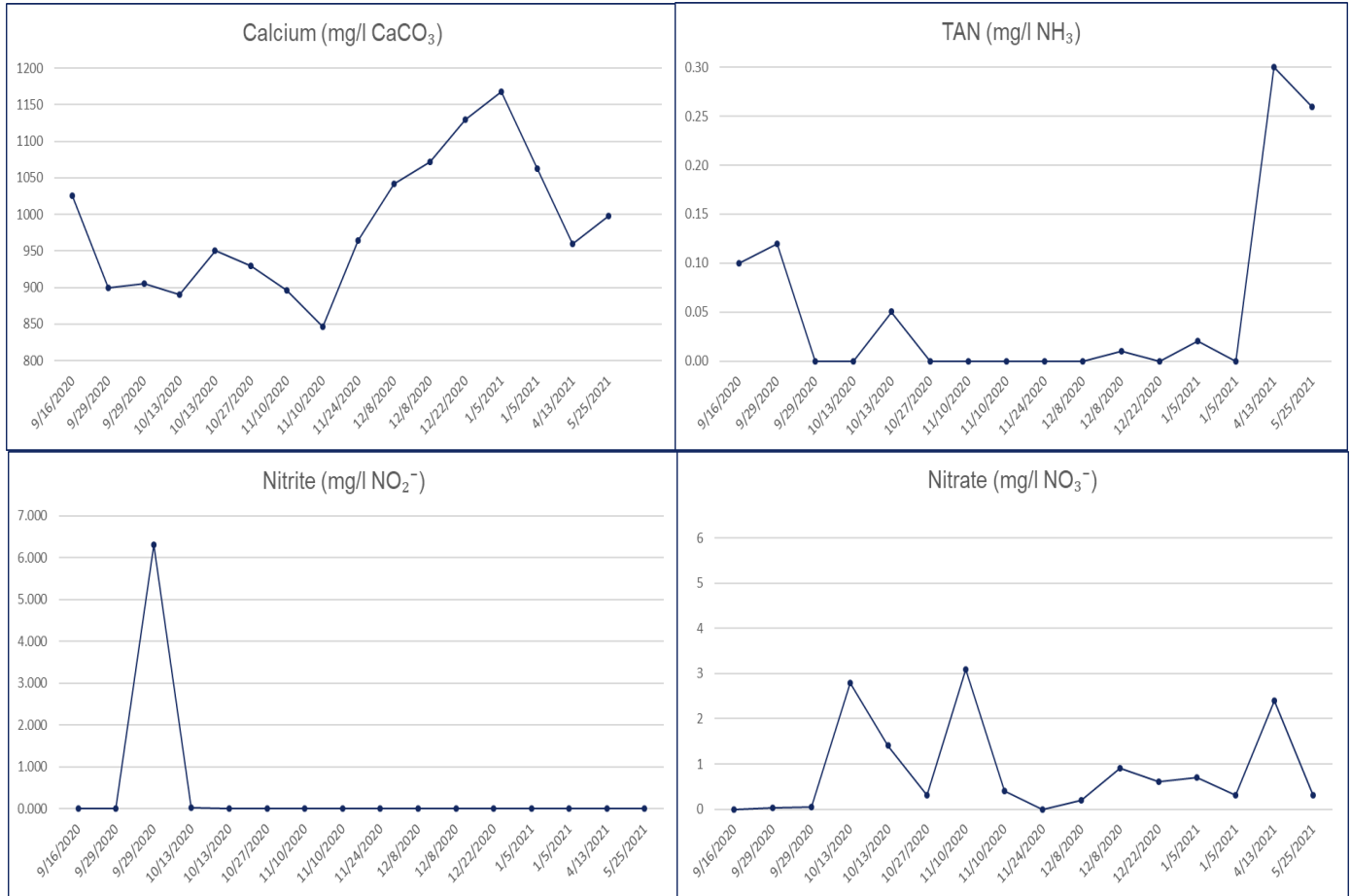


# Clam SEED Project Year 1 Report

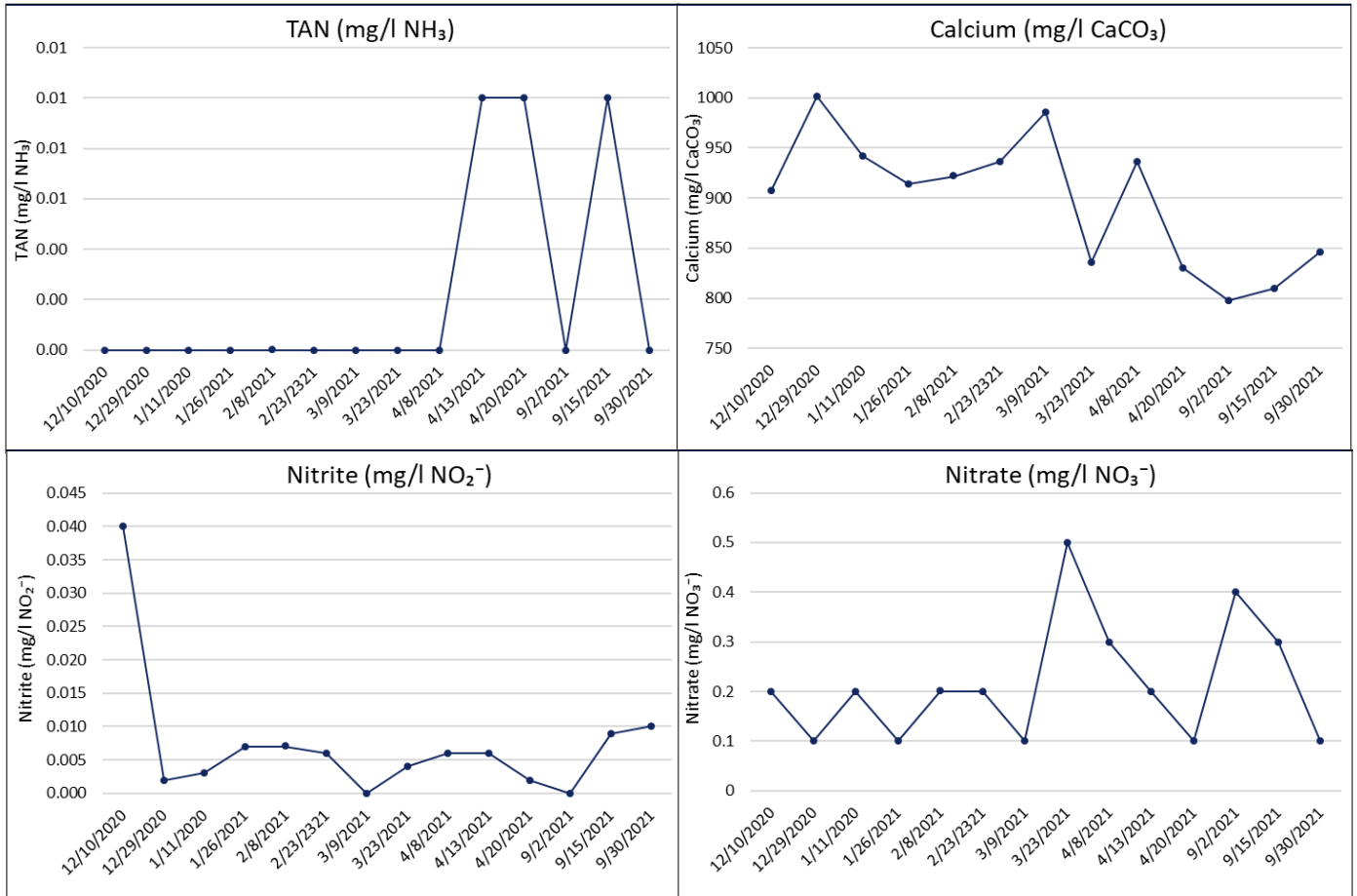
## G109 Hatchery

Source: Well  
Equipment: Various

### Water Chemistry



# Clam SEED Project Year 1 (2020-2021) Hatchery N185 Source: Surface Water Chemistry

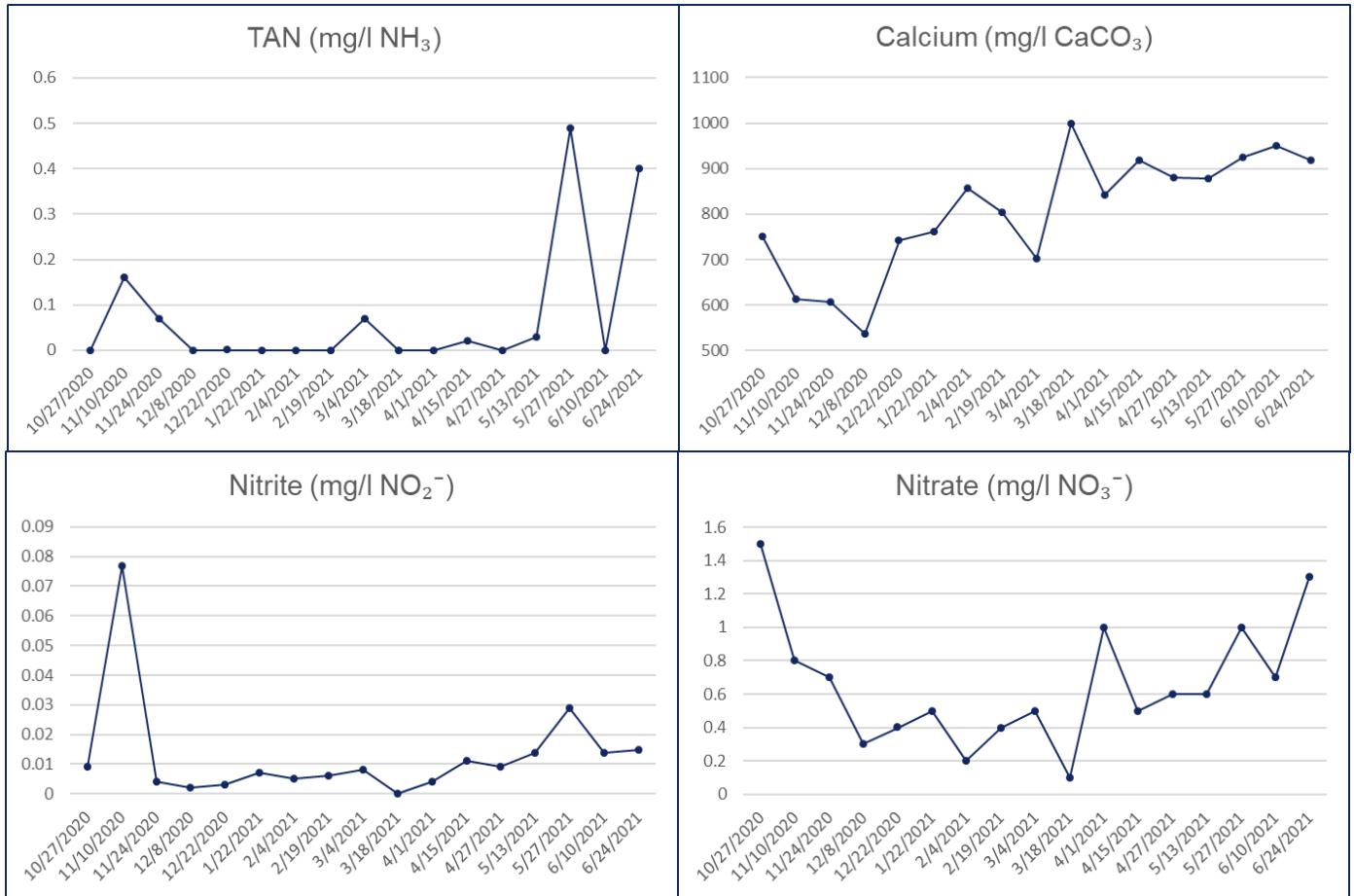


# Clam SEED Project Year 1 Report

## Y378 Hatchery

### Source: Surface System: Reservoir

### Water Chemistry





# Clam SEED Project Year 1 Report

## Z936 Hatchery

### Source: Well

### System: Reservoir and Tank Water

## Water Chemistry

